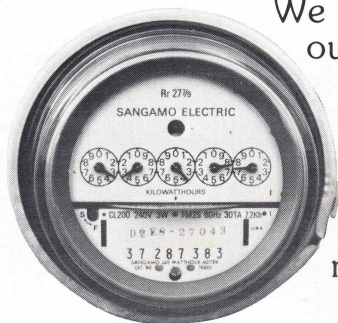


**Do we  
really need  
the breeder?**



America needs energy. The breeder is our best source of electrical energy.



We need energy to heat our homes and schools, fuel our plants and move the things we produce. But the supply of that energy is one of our most serious problems.

Electricity is a big part of the solution to the problem. Today, it provides one-fourth of all our energy. And within twenty-five years, more than half our energy will be provided by electricity.

Wise use of our fossil fuels, a maximum effort at conservation and the full development of solar, wind, tidal, and geothermal sources will still leave us with a wide gap in our energy supply.

Fortunately, we can more than fill that gap with nuclear power. Our safest, cleanest and most economical source of electricity.

However, our uranium which provides nuclear power is limited. And non-breeder reactors can tap less than two percent

of the energy in the uranium we mine. The rest of it sits idle.

This tremendous source of energy can only be tapped by the breeder reactor. That's why we need the breeder. It generates electricity. At the same time, it converts the idle uranium into fuel. Enough to refuel that same reactor. And extra fuel that can be used in other breeders or non-breeder reactors.

The breeder can extend our uranium resources for many hundreds of years. And it can assure America of an essentially unlimited supply of economical electricity. Totally independent of foreign countries.

Our jobs, in fact our lives, depend on America having safe, affordable electricity generated with a minimal impact on our environment.

The breeder will provide it.

Breeders can use all of the atoms in the uranium we mine.

Non-breeders use less than 1%.





This is one of a series  
of answers to the most  
frequently asked questions  
about breeder reactors.

# the Breeder

For other answers or  
more detailed information,  
write or call:

Breeder Reactor Corporation  
P.O. Box U  
Oak Ridge, TN 37830  
Telephone: 615-482-9661  
(Ext. 542)

